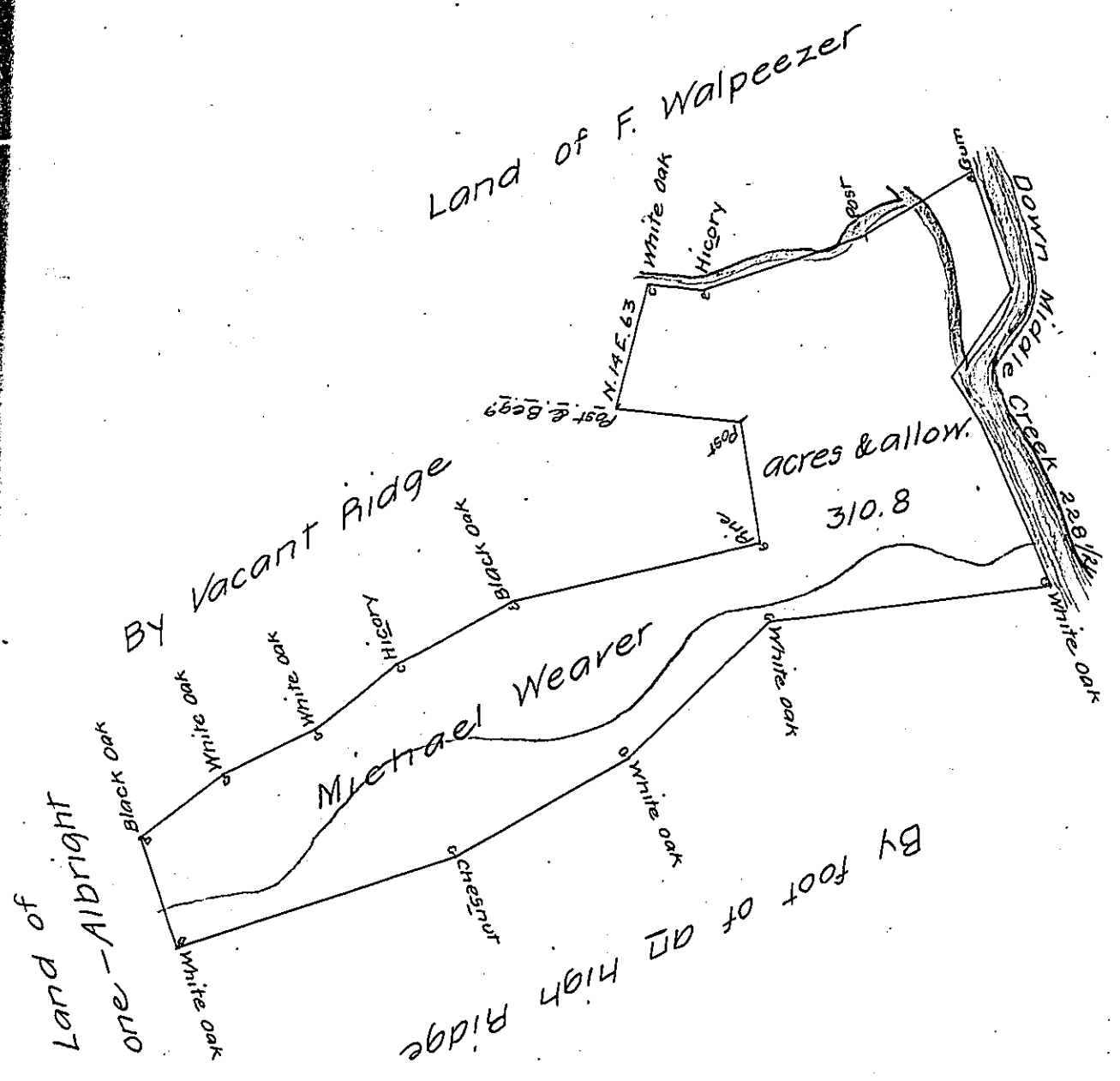


Courses & Distances

Beginning White oak
and by F. Walpeezer

- N. 14 E. 63 White oak
- East 26 Hickory
- N. 68 E. 84 Post
- N. 58 E. 63 Gum and Down Middle Creek

- S. 20 E. 61
- S. 31 W. 56 1/2
- S. 39 E. 25
- S. 26 E. 86 : 228 1/2 White Oak
- S. 80 W. 146 White Oak
- S. 45 W. 98 White Oak
- S. 60 W. 98 Chestnut
- S. 70 W. 146 White Oak
- N. 20 W. 57 Black Oak
- N. 52 E. 52 White Oak
- N. 65 E. 51 White Oak
- N. 50 E. 52 Hickory
- N. 60 E. 64 Black Oak
- N. 75 E. 129 Pine
- N. 10 W. 61 Post
- N. 86 W. 60 to Beg?



The Draught of a Tract of Land called — situate on Middle Creek in the County of Cumberland containing Three Hundred Ten acres 136 Perches with the usual allowance of six acres p. Cent. for Roads. Survey'd the 19th. day of Septem^r. Anno. Dom. 1767 In Pursuance of an Order of Survey to Michl. Weaver Bearing Date at Philad^a the 3^d day of September Anno Dom. 1766. N. 1107.

p- Wm. Maclay D.S.

To John Lukens Esqr. S.G. }
of Pennsylvania }

IN TESTIMONY that the above is a copy of the original remaining on file in the Department of Internal Affairs of Pennsylvania, made conformably to an Act of Assembly approved the 16th day of February 1833, I have hereunto set my hand and caused the Seal of said Department to be affixed at Harrisburg, this twenty-second day of April 1907

Isaac Brown
Secretary of Internal Affairs.